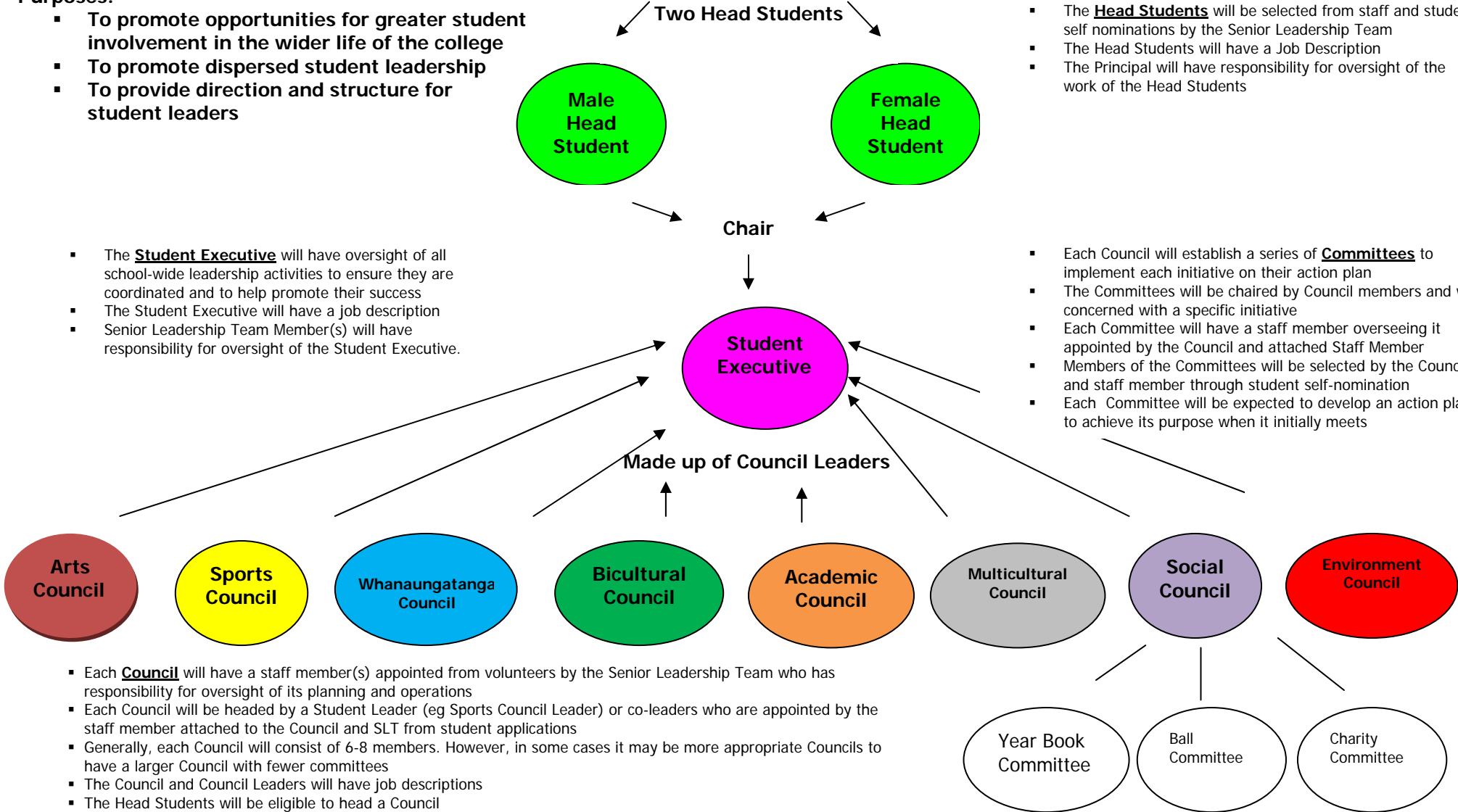


# MODEL FOR STUDENT LEADERSHIP SELWYN COLLEGE 2009

**Purposes:**

- To promote opportunities for greater student involvement in the wider life of the college
- To promote dispersed student leadership
- To provide direction and structure for student leaders

- The Head Students will be selected from staff and student self nominations by the Senior Leadership Team
- The Head Students will have a Job Description
- The Principal will have responsibility for oversight of the work of the Head Students



- The Student Executive will have oversight of all school-wide leadership activities to ensure they are coordinated and to help promote their success
- The Student Executive will have a job description
- Senior Leadership Team Member(s) will have responsibility for oversight of the Student Executive.

- Each Council will establish a series of Committees to implement each initiative on their action plan
- The Committees will be chaired by Council members and will be concerned with a specific initiative
- Each Committee will have a staff member overseeing it appointed by the Council and attached Staff Member
- Members of the Committees will be selected by the Council and staff member through student self-nomination
- Each Committee will be expected to develop an action plan to achieve its purpose when it initially meets

- Each Council will have a staff member(s) appointed from volunteers by the Senior Leadership Team who has responsibility for oversight of its planning and operations
- Each Council will be headed by a Student Leader (eg Sports Council Leader) or co-leaders who are appointed by the staff member attached to the Council and SLT from student applications
- Generally, each Council will consist of 6-8 members. However, in some cases it may be more appropriate Councils to have a larger Council with fewer committees
- The Council and Council Leaders will have job descriptions
- The Head Students will be eligible to head a Council
- Year 12 & 13 students will be eligible to apply for Council membership. This process will be coordinated centrally at the start of the year. Members will be selected by the Council Leader(s) and staff member plus a SLT member
- Each Council will begin the year by drawing up a detailed Action Plan, a process for which they will be trained